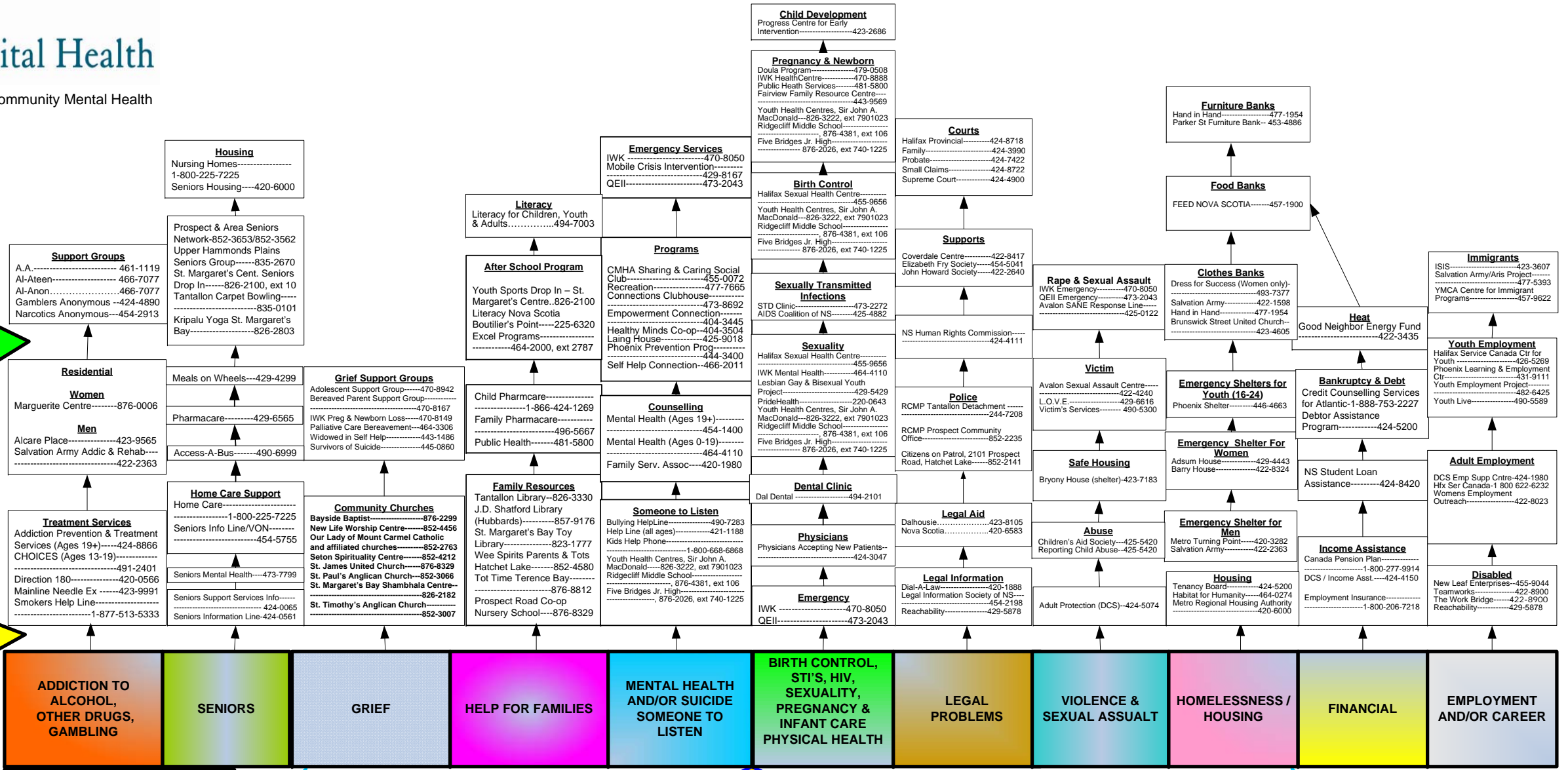




Capital Health

Bayers Road Community Mental Health

Prospect/Tantallon/Timberlea/St. Margaret's Bay Area Helping Tree



The Prospect, Tantallon, Timberlea, St. Margaret's Bay Area Helping Tree was adapted from the PEI Helping Tree. It is for informational purposes only.

Legend
DCS-Dept. of Community Services
Add. - Addictions
Supp. - Support
Avalon SANE - Sexual Assault Nurse Examiner Program
Youth Health Centre, Sir John A. MacDonald, Five Bridges Junior High & Ridgedcliff Middle School - Please note that these services are for their students only.

YOU START HERE

Data compiled by Bayers Road Community Mental Health in conjunction with Healthy Minds Cooperative, Public Health and Chebucto West Community Health Board. For revisions and updates, please call 454-1403.